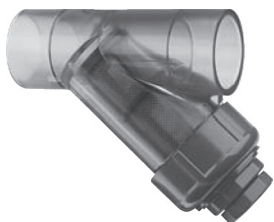


RESIN TRAPS



"Y" RESIN TRAPS

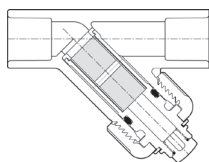


Resin Traps are an inexpensive form of insurance against the possibility of ion exchange resin or filter media accidentally leaving water treatment equipment and travelling downstream to cause catastrophic damage to process areas or equipment.

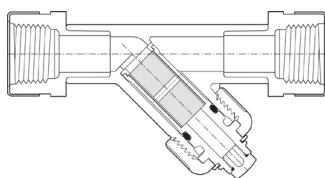
- Removable strainer basket with o-ring sealed drain plug allows quick-flushing or bleed-off valve connection
- Clear PVC body with EPDM or FKM seals
- 50 mesh 316 stainless steel strainer screen
- Horizontal or vertical mounting
- Pressure Rating: 150 psi @ 73°F for 2 inch models; 90 psi @ 73°F for 3 to 4 inch models

Clear Body "Y" Resin Traps

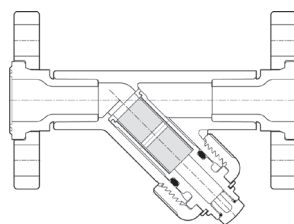
Connection Size	O-ring Material	Socket	SR Thread	Flange	Socket Union	Thread Union	SR Thread Union	1 psid @
2 inch	EPDM	RT200PC-E-SOC	RT200PC-E-SRT	RT200PC-E-FLG	RT200PC-E-SUN	RT200PC-E-TUN	RT200PC-E-STU	47 gpm
	FKM	RT200PC-F-SOC	RT200PC-F-SRT	RT200PC-F-FLG	RT200PC-F-SUN	RT200PC-F-TUN	RT200PC-F-STU	
3 inch	EPDM	RT300PC-E-SOC	RT300PC-E-SRT	RT300PC-E-FLG	RT300PC-E-SUN	RT300PC-E-TUN	RT300PC-E-STU	72 gpm
	FKM	RT300PC-F-SOC	RT300PC-F-SRT	RT300PC-F-FLG	RT300PC-F-SUN	RT300PC-F-TUN	RT300PC-F-STU	
4 inch	EPDM	RT400PC-E-SOC	RT400PC-E-SRT	RT400PC-E-FLG	RT400PC-E-SUN	RT400PC-E-TUN	RT400PC-E-STU	166 gpm
	FKM	RT400PC-F-SOC	RT400PC-F-SRT	RT400PC-F-FLG	RT400PC-F-SUN	RT400PC-F-TUN	RT400PC-F-STU	



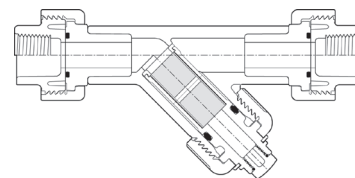
SOCKET



SPECIAL REINFORCED (SR) THREAD



FLANGE



UNION



- PP or SS body with EPDM or FKM seals
- 1/2 to 2 inch: PP ribbed 316 SS strainer screen
3 inch: 304 SS strainer screen
- Removable strainer basket with o-ring sealed drain plug for easy service
- Female NPT threaded connections

Solid Body "Y" Resin Traps

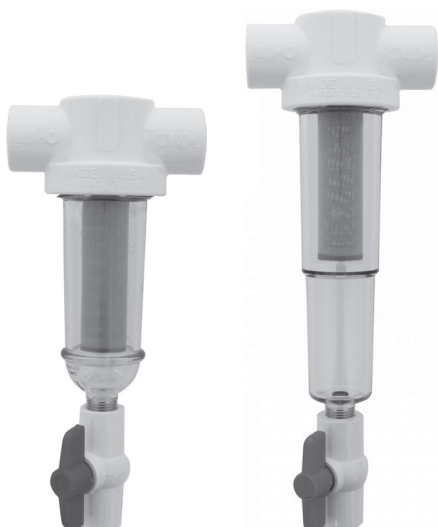
Part Number	Connection Size	Body Material	Screen Size	Max. Pressure
RT050PP-#-THD	1/2 inch	Polypropylene	60 Mesh	225 psi
RT075PP-#-THD	3/4 inch	Polypropylene	60 Mesh	225 psi
RT100PP-#-THD	1 inch	Polypropylene	80 Mesh	200 psi
RT125PP-#-THD	1-1/4 inch	Polypropylene	80 Mesh	200 psi
RT150PP-#-THD	1-1/2 inch	Polypropylene	50 Mesh	150 psi
RT200PP-#-THD	2 inch	Polypropylene	50 Mesh	150 psi
RT300PP-#-THD	3 inch	Polypropylene	50 Mesh	75 psi
RT300SS-#-THD	3 inch	Stainless Steel	50 Mesh	200 psi

For EPDM o-rings replace with "E". For FKM o-rings replace with "F".
Example: RT200PP-E-THD is a 2 inch resin trap with EPDM o-rings.

RESIN TRAPS



CENTRIFUGAL RESIN TRAPS



**Spin Down
Sediment
Filter**

**Sediment
Trapper
Filter**

Spin Down Filters utilize centrifugal force to separate sediment from water. Sediment accumulation can be seen through the clear cover and easily discharged through the bottom flush valve.

Sediment Trapper Filters offer a larger storage area and a unique element that separates the sediment and traps it beneath the element where it collects until flushed away.

Hot Water Filters add resistance to high temperatures (up to 200°F).

Chemical Resistant Filters feature a chemically resistant cover for use in applications with potentially corrosive and damaging chemicals.

- Easily flush sediment from filter by simply opening purge valve
- Sediment is visible through clear cover indicating need for flushing
- Clear cover easily removed for total cleaning
- No tools required (hand tighten only—using tools voids warranty)
- Cleanable and reusable 60 mesh stainless steel filter screen

Centrifugal Resin Traps

Connection	Filter Type	Basic	Hot Water	Chemical Resistant
3/4 inch FPT	Spin Down	UR34-60SS-F	UR34-60HT-F	UR34-60SSCR-F
	Sediment Trapper	UR34-60STSS-F	UR34-60STHT-F	UR34-60STSSCR-F
1 inch Socket	Spin Down	UR1-60SS-F	—	UR1-60SSCR-F
	Sediment Trapper	UR1-60STSS-F	—	UR1-60STSSCR-F
1-1/4 inch FPT	Spin Down	—	UR12-60HT-F	—
1-1/2 inch FPT	Spin Down	—	UR15-60HT-F	—
1-1/2 inch Socket	Spin Down	UR15-60SS-F	—	UR15-60SSCR-F
	Sediment Trapper	UR15-60STSS-F	—	UR15-60STSSCR-F
2 inch Socket	Spin Down	UR2-60SS-F	—	UR2-60SSCR-F
	Sediment Trapper	UR2-60STSS-F	—	UR2-60STSSCR-F